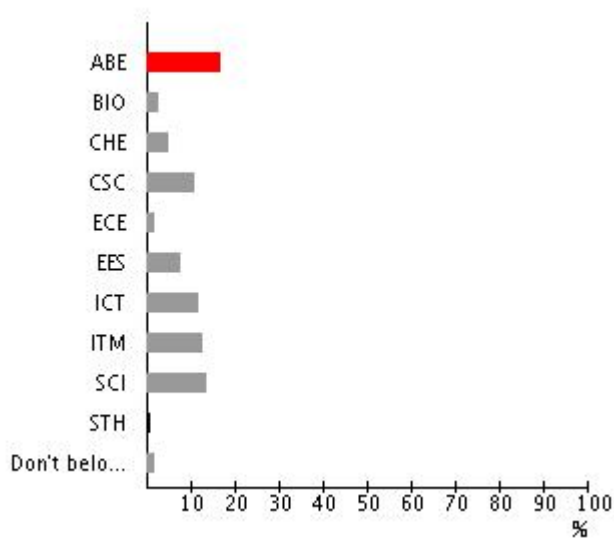


Enkätresultat

Enkät: Questionnaire on language use in the courses at KTH
Status: stängd
Datum: 2011-04-08 16:39:36
Grupp: Aktiverade deltagare (Enkät om språkanvändning i kurserna)
Besvarad av: 90(2 396) (3%)

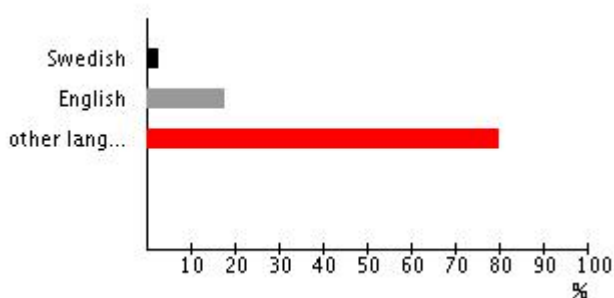
1. To which KTH school do you belong?



alternativ	ABE	BIO	CHE	CSC	ECE	EES	ICT	ITM	SCI	STH	Don't belong to a school
fördelning	17,8%	3,3%	5,6%	11,1%	2,2%	8,9%	12,2%	13,3%	14,4%	1,1%	2,2%
antal	(16)	(3)	(5)	(10)	(2)	(8)	(11)	(12)	(13)	(1)	(2)

90 har svarat av 2 396 (3%)
 Max antal val: 1

2. My mother tongue is



alternativ	Swedish	English	other language
fördelning	3,3%	18,9%	80%
antal	(3)	(17)	(72)

90 har svarat av 2 396 (3%)
Max antal val: 3

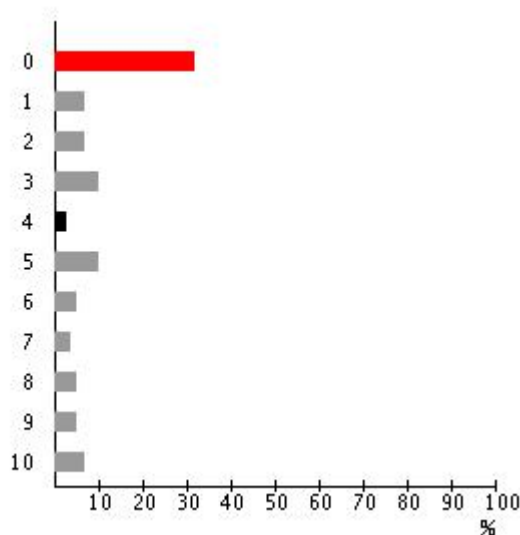
3. Please estimate your own language ability in the teaching situation (for example giving lectures or conducting seminars) using a scale from 0 to 10, where

0 means that you are not able to teach in the language,

5 means that you, after having made much preparation, are able to teach in an acceptable way,

10 means that you have no problem at all teaching in the language.

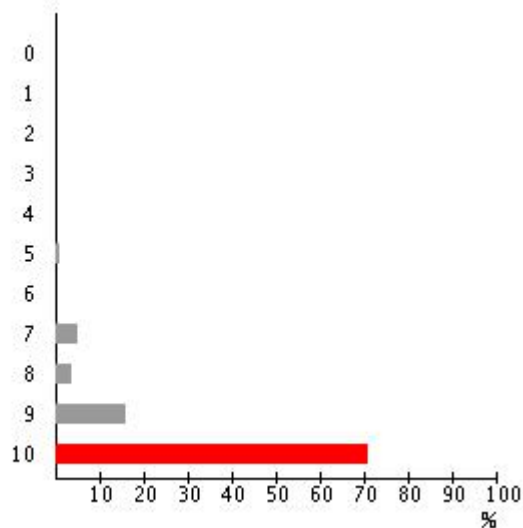
Teaching ability in Swedish:



alternativ	0	1	2	3	4	5	6	7	8	9	10
fördelning	32,2%	7,8%	7,8%	10%	3,3%	10%	5,6%	4,4%	5,6%	5,6%	7,8%
antal	(29)	(7)	(7)	(9)	(3)	(9)	(5)	(4)	(5)	(5)	(7)

Medelvärde (för siffer-svar): 3,53
90 har svarat av 2 396 (3%)
Max antal val: 1

4. Teaching ability in English:



alternativ	0	1	2	3	4	5	6	7	8	9	10
fördelning	0%	0%	0%	0%	0%	1,1%	0%	5,6%	4,5%	16,9%	71,9%
antal	(0)	(0)	(0)	(0)	(0)	(1)	(0)	(5)	(4)	(15)	(64)

Medelvärde (för siffer-svar): 9,52

89 har svarat av 2 396 (3%)

Max antal val: 1

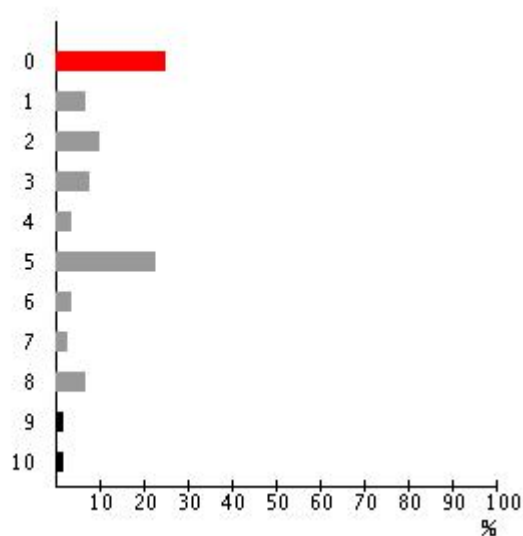
5. Please estimate your own language ability when producing written course material using a scale from 0 to 10, where

0 means that you are not able to produce written course material at all in the language,

5 means that you, after much work, are able to produce acceptable course material in the language,

10 means that you have no problem at all (with respect to language) producing written course material in the language.

Ability to produce written course material in Swedish:



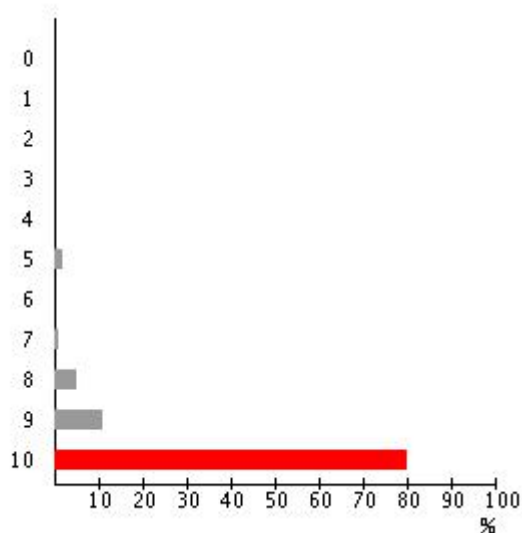
alternativ	0	1	2	3	4	5	6	7	8	9	10
fördelning	25,6%	7,8%	10%	8,9%	4,4%	23,3%	4,4%	3,3%	7,8%	2,2%	2,2%
antal	(23)	(7)	(9)	(8)	(4)	(21)	(4)	(3)	(7)	(2)	(2)

Medelvärde (för siffer-svar): 3,43

90 har svarat av 2 396 (3%)

Max antal val: 1

6. Ability to produce written course material in English:



alternativ	0	1	2	3	4	5	6	7	8	9	10
fördelning	0%	0%	0%	0%	0%	2,2%	0%	1,1%	5,6%	11,1%	80%
antal	(0)	(0)	(0)	(0)	(0)	(2)	(0)	(1)	(5)	(10)	(72)

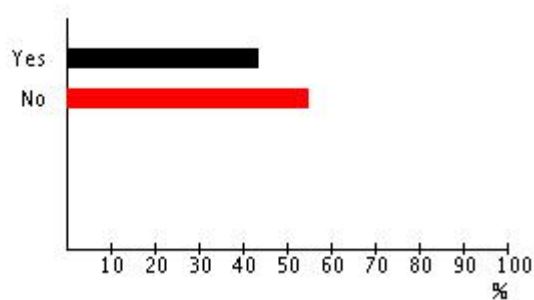
Medelvärde (för siffer-svar): 9,63

90 har svarat av 2 396 (3%)

Max antal val: 1

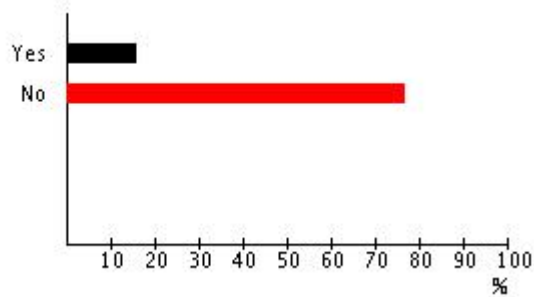
7. During your time at the university, have you taken any language course in order to improve your teaching...

...in Swedish?



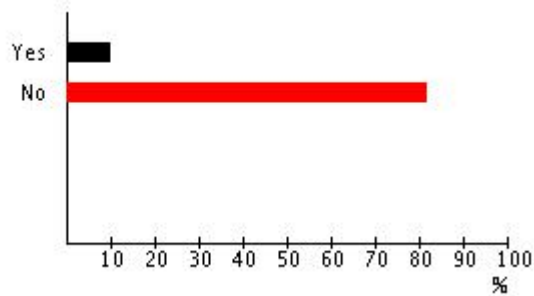
alternativ	Yes	No
fördelning	44,9%	55,1%
antal	(40)	(49)

...in English?



alternativ	fördelning	antal	Yes	No
			16,9%	77,5%
			(15)	(69)

...in any other language?

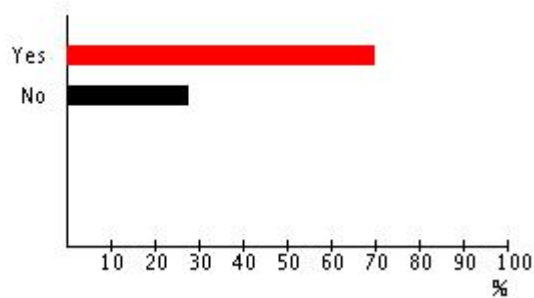


alternativ	fördelning	antal	Yes	No
			10,1%	82%
			(9)	(73)

89 har svarat av 2 396 (3%)
Max antal val: 1

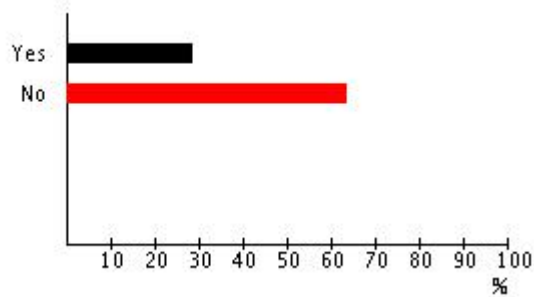
8. Would you be interested in taking a language course in order to improve your teaching...

...in Swedish?



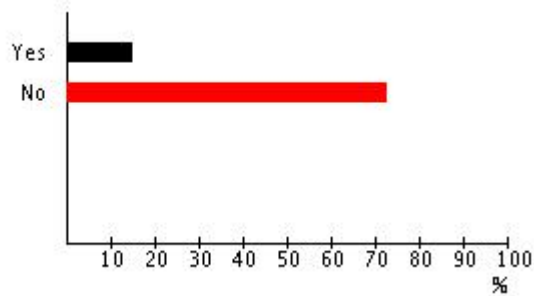
alternativ	fördelning	antal	Yes	No
			70,8%	28,1%
			(63)	(25)

...in English?



alternativ	Yes	No
fördelning	29,2%	64%
antal	(26)	(57)

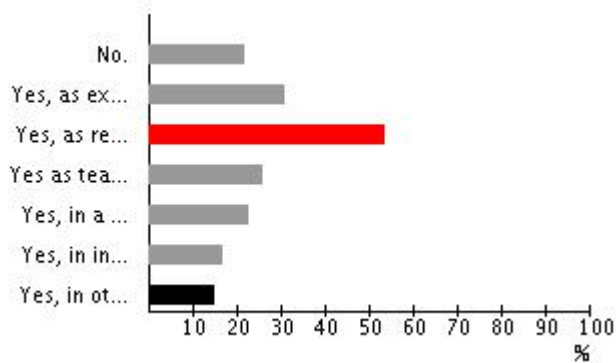
...in any other language?



alternativ	Yes	No
fördelning	15,7%	73%
antal	(14)	(65)

89 har svarat av 2 396 (3%)
Max antal val: 1

9. Do you have personal experience of studies or work in other countries than your native country or Sweden?
(Several alternatives can be chosen.)

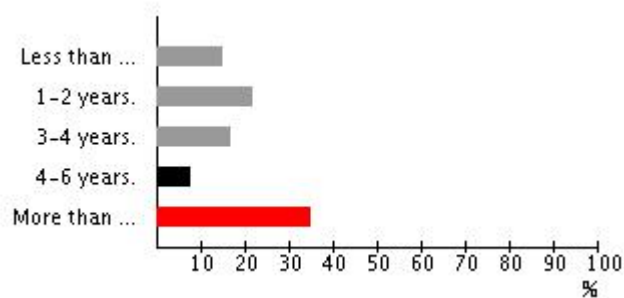


antal	fördelning	alternativ
20	22,2%	No.
28	31,1%	Yes, as exchange student (irrespective of level).
49	54,4%	Yes, as researcher.
24	26,7%	Yes as teacher.
21	23,3%	Yes, in a company.
16	17,8%	Yes, in international organizations/committees.

14 15,6% Yes, in other context.

90 har svarat av 2 396 (3%)
Max antal val: 7

10. How long have you been employed at KTH?



alternativ	Less than a year.	1-2 years.	3-4 years.	4-6 years.	More than 6 years.
fördelning	15,6%	22,2%	17,8%	8,9%	35,6%
antal	(14)	(20)	(16)	(8)	(32)

90 har svarat av 2 396 (3%)
Max antal val: 1